

# Rutherford County

Reporting Quarter: 3rd Quarter 2006

County Profile Contact (919) 715-6374  
Economic Development Contact (919) 733-4977

## Demographics

Population, July 2005	63,303	39
Population, 2000 Census	62,901	38
Population, 1990 Census	56,956	37
Percent population change, 1990-2000	9.5	75
Percent population change, NC, 1990-2000	21.4	

## County Rank



## Workforce & Education

Employment, Sept 2006	27,271	44
Unemployed, Sept 2006	2,128	31
Percent unemployed, Sept 2006	7.2	8
Percent unemployed, 2005	8.8	3
Percent unemployed, NC, Sept 2006	4.5	
Percent unemployed, NC, 2005	5.2	
Percent high school graduates, 2000	70.4	67
Percent high school graduates, NC, 2000	78.1	
Average SAT score, 2006	1,424	68
Average SAT score, NC, 2006	1,493	
Percent bachelor's degree or higher, 2000	12.5	60
Percent bachelor's degree or higher, NC, 2000	22.5	

## Taxes, Sales & Services

Property taxes/\$100 Value	\$0.6100
Taxable sales (Mil \$, Aug 06)	\$41.7
Taxable sales (Mil \$, FY 05-06)	\$376.4
Number of physicians, 2005	86
Population/physician ratio, 2005	736
Population/RN ratio, 2005	153
Population/dentist ratio, 2005	3,724
Tier designation, 2007	1
Partnership Region	Advantage West
Licensed Child Care Facilities	58
Child Care Capacity	2,081

## Income, Housing & Poverty

Average weekly wage per employee, First Quarter 2006	\$535	53
Median household income, 2003	\$32,290	65
Per capita personal income, 2000	\$21,304	67
Per capita personal income, 2004	\$23,486	71
Per capita personal income, NC, 2005	\$30,553	
Median value of owner-occupied housing units, 2000	\$71,387	70
Median value of owner-occupied housing units, NC, 2000	\$108,300	
Percent in poverty, 2003	15.2	41
Percent in poverty, NC, 2003	13.4	

Notes: Data are the latest available at the date the profile was prepared. Demographics are from U.S. Census. Workforce & Education are from NC Employment Security Commission, U.S. Census, and NC Dept. of Public Instruction respectively; county unemployment rates are seasonally unadjusted. Average wage are from ESC's "Insured Employment and Wages in NC for Private Industry by Sector (2 digit)" which is based on the Current Population Survey. Income, Housing & Poverty are from U.S. Bureau of Economic Analysis and the U.S. Census, respectively. Jobs and Investments are from NC Dept. of Commerce. Closings & Layoffs are from the NC Employment Security Commission. Private Sector Employment are from NCESC's "Insured Employment and Wages in NC for Industry by Sector (2 digit)" series; \* indicates data not available or suppressed for confidentiality reasons. Taxes, Sales & Services are from the NC Dept. of Revenue and the Cecil G. Sheps Center for Health Services Research, UNC-Chapel Hill, respectively. \*\*County Ranking 1=highest.

## Announced Jobs & Investments

Jobs announced, 2005	299
Jobs announced, Thru Sept 2006	510
Total investment announced, 2005	\$18,775,000
Total investment announced, Thru Sept 2006	\$31,267,500

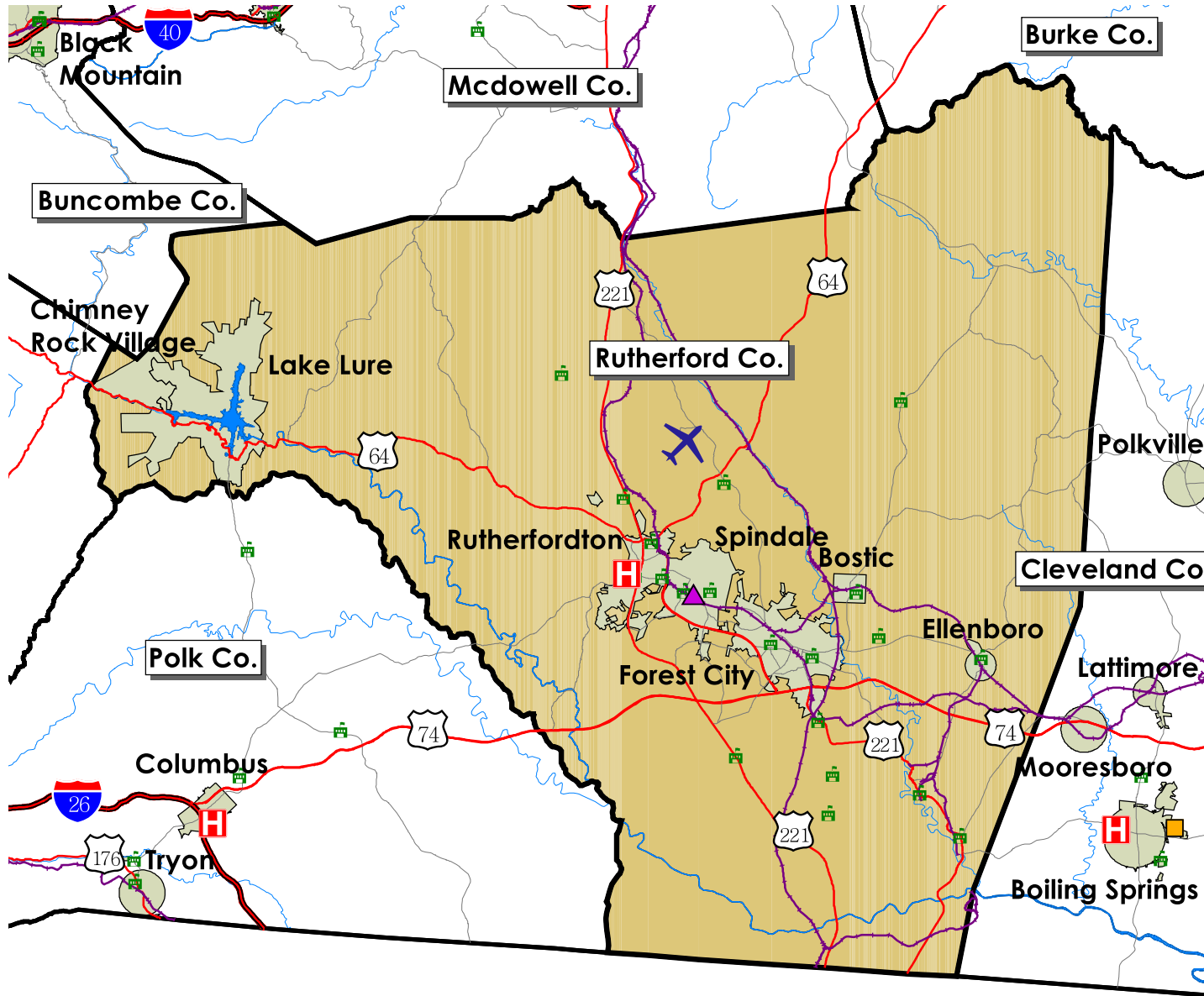
## Announced Closings & Layoffs

Number of affected establishments, 2005	9
Number of affected establishments, Thru Oct 2006	3
Job losses, 2005	1,174
Job losses, Thru Oct 2006	105

## Employment and Wages, by Sector (1st Quarter 2006)

	Rutherford			North Carolina		
	Avg Emp	% Total	Avg Wkly Wage	Avg Emp	% Total	Avg Wkly Wage
Total All Industries	21,417	100.0	\$535	3,875,426	100.0	\$744
Total Government	3,561	16.6	\$605	666,506	17.2	\$795
Total Private Industry	17,856	83.4	\$529	3,208,920	82.8	\$752
Agriculture Forestry Fishing & Hunting	47	0.2	\$432	25,671	0.7	\$535
Mining	*	*	*	3,598	0.1	\$1,479
Utilities	194	0.9	\$1,712	14,431	0.4	\$1,441
Construction	1,310	6.1	\$549	233,264	6.0	\$688
Manufacturing	4,046	18.9	\$640	554,720	14.3	\$891
Wholesale Trade	527	2.5	\$750	173,483	4.5	\$1,051
Retail Trade	2,630	12.3	\$381	445,599	11.5	\$448
Transportation and Warehousing	1,402	6.5	\$597	136,630	3.5	\$725
Information	917	4.3	\$505	74,526	1.9	\$1,119
Finance and Insurance	309	1.4	\$686	145,994	3.8	\$1,849
Real Estate and Rental and Leasing	208	1.0	\$589	48,850	1.3	\$685
Professional and Technical Services	667	3.1	\$498	170,412	4.4	\$1,080
Management of Companies and Enterprises	152	0.7	\$658	69,004	1.8	\$2,026
Administrative and Waste Services	459	2.1	\$394	222,470	5.7	\$485
Educational Services	2,350	11.0	\$532	365,681	9.4	\$644
Health Care and Social Assistance	2,910	13.6	\$537	497,520	12.8	\$679
Arts, Entertainment and Recreation	225	1.1	\$383	46,053	1.2	\$535
Accommodation and Food Services	1,500	7.0	\$212	309,612	8.0	\$248
Other Services Ex. Public Admin	229	1.1	\$392	96,207	2.5	\$459
Public Administration	1,198	5.6	\$604	219,418	5.7	\$723
Unclassified	83	0.4	\$273	22,283	0.6	\$508

# Trends Profile Map Rutherford County



## Legend

- Public Schools
- Airports
- Hospitals
- Colleges and Universities
- Community Colleges
- Rail Lines
- Interstate highways
- US Highways
- State and County Highways
- Major Rivers and Streams
- Major Waterbodies
- Municipal Boundaries



# Rutherford County

Employment Characteristics

Reporting Quarter: 3rd Quarter 2006

County Profile Contact (919) 715-6374

Economic Development Contact (919) 733-4977

Employment Security Commission (919) 733-2936

## Top Manufacturers (3rd Quarter 2005)

NATIONAL TEXTILES LLC  
WLR CLIFFSIDE DENIM LLC  
WATTS REGULATOR COMPANY (A CORP)  
THE TORRINGTON COMPANY  
BROYHILL FURNITURE INDUSTRIES INC  
PARKER HANNIFIN CORPORATION  
REEVES BROTHERS INC  
MAKO MARINE INTERNATIONAL INC  
AEROQUIP CORP  
CONE JACQUARDS LLC

## Employment Range

500-999  
250-499  
250-499  
100-249  
100-249  
100-249  
100-249  
100-249  
100-249  
100-249



## Top Non-Manufacturing Employers (3rd Quarter 2005)

WAL-MART ASSOCIATES INC  
RUTHERFORD COUNTY SCHOOLS  
RUTHERFORD HOSPITAL INC  
AMERICAN GREETINGS CORPORATION  
COUNTY OF RUTHERFORD  
ISOTHERMAL COMMUNITY COLLEGE  
A G INDUSTRIES INC  
ALL AMERICAN HOMES OF N. C., L.L.C.  
COXE PERSONNEL SERVICES INC  
TANNER COMPANIES LIMITED

## Employment Range

1,000+  
1,000+  
500-999  
250-499  
250-499  
250-499  
250-499  
250-499  
100-249  
100-249

## Industry

Trade, Transportation, and Utilities  
Education and Health Services  
Education and Health Services  
Information  
Public Administration  
Education and Health Services  
Information  
Construction  
Professional and Business Services  
Trade, Transportation, and Utilities